

# VistaScan Combi View - efficiency without compromise

The image plate scanner with a touchscreen for all formats



**New!**

COMPRESSED AIR  
SUCTION  
IMAGING  
DENTAL CARE  
HYGIENE



# Image plate technology - c

With the versatile VistaScan Combi View, Dürr Dental is clearly signposting

In addition to the tried-and-trusted technology and high image quality of the VistaScan systems, the VistaScan Combi View also offers numerous functions which considerably improve the convenience, efficiency and reliability of the application. This gives the surgery team the confidence that they can rely on their equipment.

The greyscale gradation of the VistaScan image plate enables depiction on a par with that of film



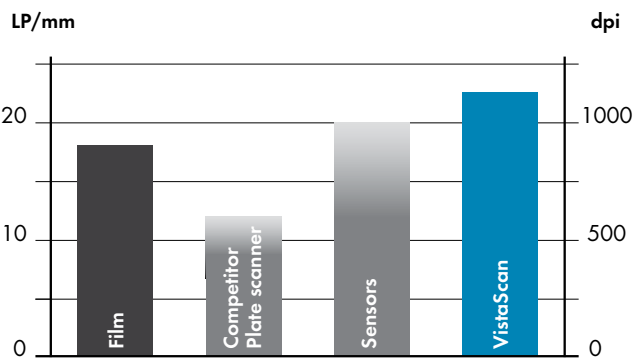
Analogue film



Competitors (14 bit)



VistaScan (16 bit)



The effective image resolution of X-ray systems in comparison:

The VistaScan systems from Dürr Dental achieve the highest resolution when compared with the competition.

# The new standard for intraoral and extraoral formats



## The VistaScan Combi View

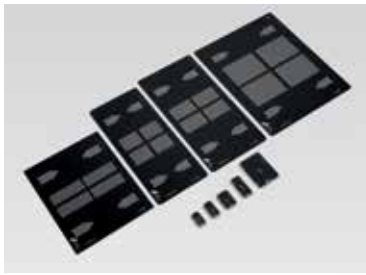
With innovative and practical solutions, Dürr Dental has been shaping the field of dental imaging for almost five decades. In the field of digital X-rays with image plates in particular, Dürr Dental technology offers images of the highest resolution currently possible. Therefore, it meets the needs of all diagnostic requirements.

The new VistaScan Combi View image plate scanner enables the intuitive, efficient and time-saving digitisation of image plates for both intraoral and extraoral formats. Amongst other things, its large touchscreen and easy-to-use user interface contribute to this. Thanks to the integrated wireless LAN functionality, the device is exceptionally flexible.

This makes image plate diagnostics for dentists quicker, more reliable and more convenient with the VistaScan Combi View.

## The benefits at a glance:

- Highest image quality
- High-resolution touchscreen
- ScanManager for optimum surgery workflow
- For all intraoral and extraoral formats
- Table-mounted or (optional) wall-mounted
- PC connection via WLAN/LAN
- Work possible even without a PC



### The universal scanner for intraoral and extraoral formats

The VistaScan Combi View enables the scanning of all intraoral and extraoral image plate formats. Handling is as easy as for analogue film.



### ScanManager - for even more efficient work

You can send scan jobs to the scanner from any work station. You then select and start the required job on the scanner by touching the screen. Afterwards, the image is automatically sent to the requesting PC. There's no need to wait around near the device.



### Stand-alone mode

The VistaScan Combi View can also work independently, you can still scan and save X-ray images even if the IT network is down. The images are stored temporarily in the internal memory and are transferred to the database later on. If necessary, the images can be displayed on the high-resolution screen.



\*A comparative study of image quality and radiation exposure for dental radiographs produced using a charge-coupled device and a phosphor plate system. School of Dentistry, Cardiff University, 2009



Image plates better than sensors!\*

### Convenient touchscreen

The 4,3" high resolution touchscreen can display 16.7 million colours and provides excellent image quality. The preview function for the scanned image allows X-ray results to be quickly checked.



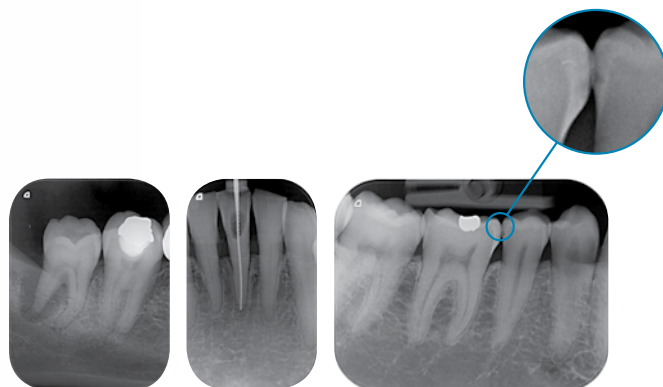
### Intuitive controls - optimum workflow

The convenient user interface enables the easy operation of the VistaScan Combi View - by hand or with the provided stylus. In addition to other functions, it provides lots of information to support the workflow. Preset scan modes enable quick and reliable scanning.



### Excellent image quality

Thanks to PCS technology, the VistaScan Combi View can reliably detect D1 caries lesions and endo instruments up to ISO 06.



### Wi-Fi functionality

The integrated wireless functionality allows the VistaScan Combi View to be easily integrated into an existing network and positioned in a space-saving fashion thanks to a wall-mounted installation option. Naturally, there is also a LAN interface.



# A great feeling of efficiency and reliability

## The easy switch from film to image plates

Dürr Dental's image plate technology makes it unbelievably easy to switch to a digital workflow. This is thanks to the wide range of formats the VistaScan Combi View allows you to process on a single device. Since the X-ray process and image formats do not differ from those for analogue film, there's not really anything new to learn. Even for panoramic or cephalometric X-rays, you simply replace the X-ray film with an image plate.

The thin, flexible plate offers clear advantages for both the surgery team and the patients: It is easier to position and sits more comfortably in the patient's mouth. Once the image has been taken, it appears on the monitor in just a few seconds. Thanks to an integrated re-setting function, the durable image plate is then immediately ready to be used again.



## Optimum workflow

The level of detection of details achieved by the VistaScan image plates is superior to that of X-ray film and other image plate systems. This provides dentists with a sound basis for making reliable diagnosis. The DBSWIN imaging software provides help in this regard and ensures ergonomic work processes. The VistaScan Combi View can even be used with other common software if necessary.

## Intraoral from S0 to S4

In intraoral mode, up to four image plates can be read in at the same time. The easy feeding system ensures simple handling and durable image quality.



# a new dimension in X-rays

...ing the future of imageplate scanners.



## Top detection of details for diagnostic support

Digital filters for reliable diagnostics: The DBSWIN imaging software optimises all images automatically then saves them. Diagnosis-supporting filters can also be used to adjust the contrast and sharpness of images. This enables a more detailed diagnosis. The zoom function allows the operator to convincingly explain early-stage apical processes to patients.

# All data, facts and accessories

VistaScan Combi View	
Screen	4.3" touchscreen, 800 x 480 pixels, 16.7 million colours
Plate sizes	0 to 4
Intraoral formats (cm)	2 x 3 / 2 x 4 / 3 x 4 / 2.7 x 5.4 / 5.7 x 7.5
Panorama formats (cm)	12.7 x 30.5 / 15 x 30
Ceph formats (cm)	18 x 24 / 20 x 24 With VistaScan Omni View: 24 x 30
Effective resolution (lp/mm)	22 (1100 dpi)
Theoretical resolution (lp/mm)	40 (2000 dpi)
Greyscale (bits)	16 (65,536)
Weight (kg)/mounting	24/table-mounted; optionally, wall-mounted
Dimensions (H x W x D in mm)	720 x 380 x 380
Interfaces	LAN, Wireless



## Image plate holder system

Thanks to their deburred and rounded edges, image plate holders from Dürr Dental offer optimum protection for the image plate. Holders are available for all areas of application and help users to create really precise radiographs.



## VistaIntra

Perfectly tailored for a digital workflow with an image plate or sensor. Can also be used in the traditional manner.



## Image plate cleaning cloth

Dirt on image plates shows up in the images and reduces lifetime. VistaScan image plate cleaning wipes can be used to clean the image plates when necessary. They also have a disinfecting effect. Your benefit: Long-lasting, optimum image quality.

## Animation



DÜRR DENTAL AG  
Höpfigheimer Strasse 17  
74321 Bietigheim-Bissingen  
Germany  
[www.duerr.de](http://www.duerr.de)  
[info@duerr.de](mailto:info@duerr.de)

