

# CS 9300 Family

Featuring Low Dose Imaging



3D images—now at a dose up to 85% lower than panoramic imaging<sup>1</sup>



## Optimal dose. Optimal scanning times.

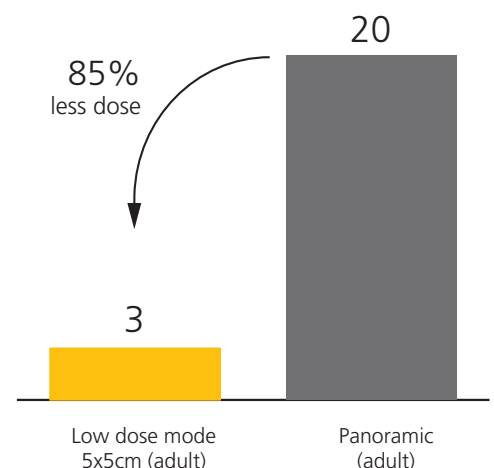
For diagnostic-quality 3D images at a significantly lower dose than panoramic 2D imaging, look no further than the CS 9300. Now available on both the CS 9300 and CS 9300 Select, the new Low Dose mode drastically reduces radiation dose and scanning times when compared to the system's standard imaging acquisition program. With an effective dose of 3 $\mu$ Sv for 5x5 cm adult exams, the CS 9300 with Low Dose Imaging delivers up to an 85% lower radiation dose than 2D panoramic imaging.<sup>1</sup> And, with two programs available, the CS 9300 gives practitioners a new level of control over image quality and radiation exposure. Select the program that's best for your diagnostic needs:

- Low Dose Mode: Maximize dose reduction by 73% to 95% over the standard acquisition mode<sup>2</sup>
- Fast Scan Mode: Optimize image quality and reduce dose by as much as 40% when compared to the standard acquisition mode<sup>1</sup>

1. Based on studies conducted by John B. Ludlow, University of North Carolina, School of Dentistry: Dosimetry of CS 8100 CBCT Unit and CS 9300 Low-Dose Protocol, August 2014; Dosimetry of the Carestream CS 9300 CBCT unit, June 2011. 85% reduction (3 $\mu$ Sv) found in 5x5 cm adult exams; exact dose reduction varies based on field of view and ranges from 0% to 85%.

2. 73% to 95% dose reduction when compared to the standard acquisition program for the CS 9300/CS 9300 Select and varies based on field of view selected.

Effective dose in  $\mu$ Sv (ICRP 2007)



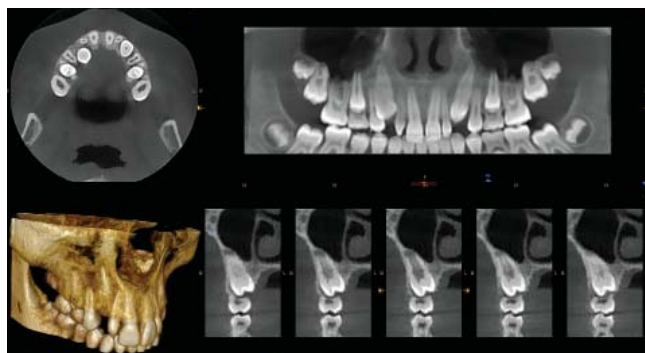
# CS 9300 effective dose<sup>1,2</sup>

FoV (cm)	Location	Patient	Standard mode Effective dose (μSv) <sup>1</sup>	Fast scan mode <sup>1</sup>		Low dose mode <sup>2</sup>	
				Effective dose (μSv)	% reduction vs. Standard	Effective dose (μSv)	% reduction vs. Standard
5x5	Anterior Maxillary	Adult	58	35	40%	3	95%
5x5	Anterior Maxillary	Child	30	18	40%	4	87%
10x5	Maxillary	Adult	30			8	73%
8x8	Jaw	Adult	75			14	81%
10x10	Jaw	Adult	79			19	76%
17x11	Sinus-Head	Adult	237	142	40%	20	92%

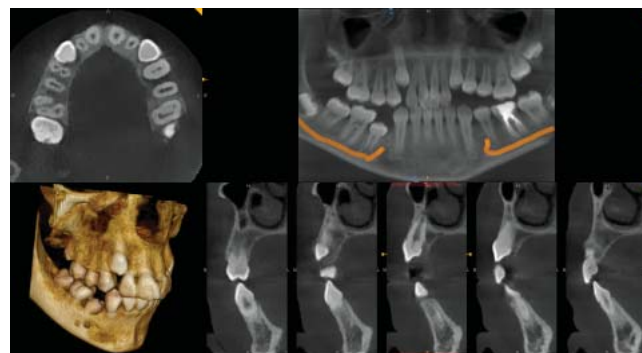
1. 2 Based on studies conducted by John B. Ludlow, University of North Carolina, School of Dentistry: Dosimetry of CS 8100 CBCT Unit and CS 9300 Low-Dose Protocol, August 2014; Dosimetry of the Carestream CS 9300 CBCT unit, June 2011.

The CS 9300 with Low Dose Imaging is ideal for the following applications:

- Implant planning
- Follow-up exams
- Pediatric exams
- Analysis of skeletal symmetry
- Impaction/supernumerary evaluations
- Analysis of airways



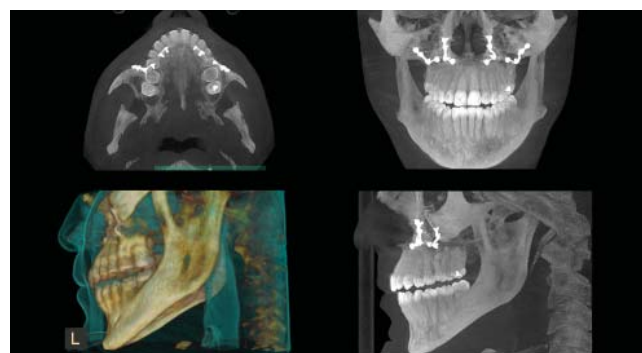
10 cm x 5 cm - 400 μm / Effective dose 8 μSv



8 cm x 8 cm - 400 μm / Effective dose 14 μSv



10 cm x 10cm - 400 μm / Effective dose 19 μSv



17 cm x 11 cm - 400 μm / Effective dose 20 μSv

To learn more about Low Dose Imaging and the CS 9300, visit [www.carestreamdental.com](http://www.carestreamdental.com) or contact your local authorised dealer.