

image maker

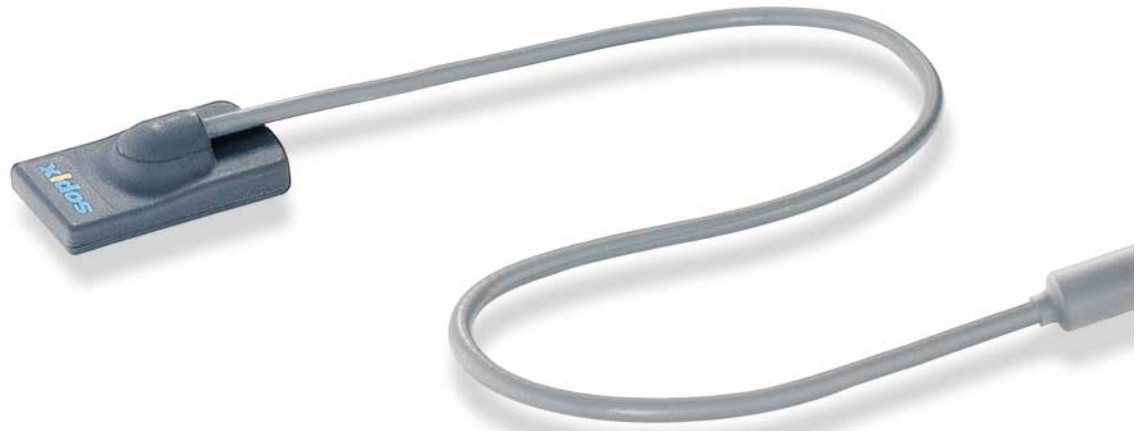


sopix[®]

Simply digital



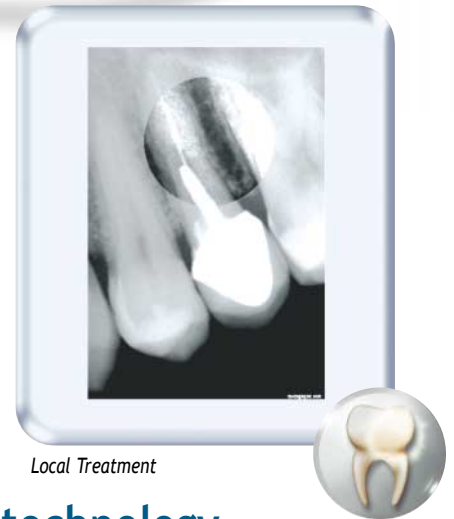
The Sopix® system, in combining **simplicity with unique performance**, makes the most of its E.C.S™ (Exposure Control System) technology to produce very high definition instant pictures. This condensed technology offers all the advantages of digital techniques with the **shortest display time** on the market for this category!⁽¹⁾ Combined with Sopro Imaging software and your dental program, Sopix gives you the tools for **new-generation diagnostics**.



Perfectly precise pictures

Our CCD sensors offer 1.25 million pixels for Size 1 and more than 2 million for Size 2, producing very high definition X-rays whose quality is comparable to that offered by the best intraoral x-ray films.

The picture is faithfully rendered in gray scales, enabling in-depth examination for precise and efficient diagnosis.



Local Treatment

Hot plug and play technology

To change between sensors of different sizes, all you have to do is press the connector, and you don't have to worry about setting up the system configuration. Sopix immediately recognizes the sensor in the patient's mouth and adjusts itself instantaneously.

Total reliability

Sopix sensors use a technology offering a **working life of around 100,000 images**. Their excellent connector systems make inadvertent disconnection during use a thing of the past. Combined with a Rinn type holder, it is easy to focus on the area to be X-rayed and obtain a perfect shot.



high-resolution X-rays
high-resolution

⁽¹⁾ tests performed with a size 1 sensor and a USB 1.1 connection from the moment the timer is triggered.



The best picture quality ever obtained to date, thanks to E.C.S (Exposure Control System) technology.
Uniquely fast performance thanks to a 32-bit DSP processor.



60 ms



100 ms



200 ms

Pictures taken with an X-Mind AC, 70 kV, 8 mA type generator.

Your timer is set once and for all

Using the unique E.C.S (Exposure Control System) technology developed by SOPRO, Sopix compensates for over- and under-exposures on each acquisition, even when exposure times are very short. This means that you only need to adjust your timer **once for all your pictures**. Bad shots are a thing of the past: **your pictures will always be usable and you'll get constant quality over time.**

Best acquisition time in its category

Thanks to its calculation power, Sopix enables you to render X-rays on screen in record time. You'll **only wait 4 seconds** between the moment you trip your timer and the moment the picture is displayed on the screen⁽¹⁾.

Less radiation exposure for the patients

By **optimizing exposure times like this**, you will reduce the radiation to which patients are exposed by 95% compared with conventional film and by 50% compared with an ordinary digital X-ray system.

exclusive



Technology



SOPRO
imaging

The Smart software

Sopro Imaging's ergonomics
were specially designed for armchair operation.

Operations reduced to a minimum

Personalize the display and processing of your pictures to fit your working methods: every operational feature of the software can be configured, and grouped in the same processing area.

This means that you only need to display on the screen the six tools you use most often. All the patient's images (X-rays, color pictures, scanned documents, etc.) are within a click's reach at all times.

Light and dynamic interface

Processing tools are represented by simple and intuitive icons that you simply drag-and-drop into position. **Sopro Imaging** adjusts to the resolution of your screen and offers two display modes: full screen mode and design mode.



The fully automated system

On-screen display



The Sopix controller incorporates an illuminated signage system informing you of the status of the system at all times (available, acquisition in progress...). The signage is displayed on screen simultaneously, and enables you to orient the picture before exposure so that **your images are always facing the right way**.

Ever ready

Unique: **Sopix is always ready to receive rays**. This means that you don't have to perform any software or hardware operations before or after acquiring each image.

In just a few seconds, you will be able to take enough X-rays for a full mouth series and optimize your time in the chair.



Compatible with your dental software

If your dental software is compatible with the international TWAIN standard, **you will be able to incorporate the Sopix system right away**. Without changing your working methods, you'll be able to draw on the many advantages offered by SOPRO digital dental X-ray technology.

Self-powered

Sopix is easy to install, and **connects directly to your computer** without the need for an outside power supply or any other conversion equipment. Power consumption is very low, and the equipment can be placed up to 5 m away from your PC.

Live updates

Thanks to the **Sopro Update** system, your software automatically detects and installs available updates through the internet. This gives you the benefit of real-time upgrades of our products.

Making the most of SOPRO's medical image processing know-how and experience, Sopix offers you unique performance!

*Compatible
with the international Twain standard*

Digit'all

Combined with the X-Mind AC/DC generators and the Sopro cameras,
Sopix is the ideal combination for all-digital technology.



Technical specifications

Sensor Size 1

External dimensions.....25 x 39,5 mm
Active surface area600 mm² (20 x 30 mm)
Number of pixels.....1.25 million
Pixel size22µm x 22µm

Sensor Size 2

External dimensions.....32 x 42,5 mm
Active surface area ..990 mm² (27,50 x 36.08 mm)
Number of pixels.....2.05 million
Pixel size22µm x 22µm

Sensor technologyCCD and scintillator

True resolution..... 20 pl/mm
Theoretical resolution 22.7 pl/mm

Sensor cable length2,00 m

Controller

TechnologyDSP 32 bits

ConnectionUSB 1.1 et USB 2.0
Image acquisition in 4096 gray scales
Cable length5 m
Image processing softwareSopro Imaging

Minimum configuration required:

500 MHz Pentium III
128 MB RAM
20 GB hard disk
2 USB ports
Operating System: Windows 98 SE, 2000 Pro and XP SP1 and above
Monitor resolution: 1024 x 768 and above

Recommended configuration

1.8 GHz Pentium IV
256 MB RAM
40 GB hard disk
4 USB ports
Operating System: Windows XP Pro SP1 and above
Monitor resolution: 1024 x 768 and above

References

Sopix USB1 Pack - Size 1:

Sopix USB1 Controller + Sensor Size 1
+ Sopro Imaging softwareS-800-9001

Sopix USB1 Pack - Size 2:

Sopix USB1 Controller + Sensor Size 2
+ Sopro Imaging softwareS-800-9002

Sopix USB2 Pack - Size 1:

Sopix USB2 Controller + Sensor Size 1
+ Sopro Imaging softwareS-800-9004

Sopix USB2 Pack - Size 2:

Sopix USB2 Controller + Sensor Size 2
+ Sopro Imaging softwareS-800-9005

Sopix USB1 ControllerS-800-1001

Sopix USB2 ControllerS-800-1002

Sensor Size 1.....S-800-0001

Sensor Size 2.....S-800-0002

Options

Sopix sensor holder kit.....700014

Sopix Sensor Size 1 protections403014

Sopix Sensor Size 2 protections403015

