



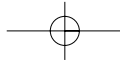
image maker



sopix[®]
WIRELESS

Get Free!





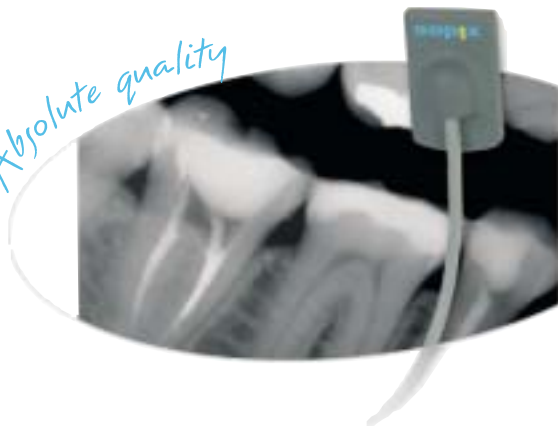
Stress-free Radiology

Sopix Wireless is totally discrete thanks to its **size and weight (170 g)** and gives you total freedom of movement in your working environment. Its **long battery life** allows shooting 100 to 200 images without recharging. Sopix Wireless is perfectly adapted to a multi-user environment.

Fundamental freedom



Absolute quality



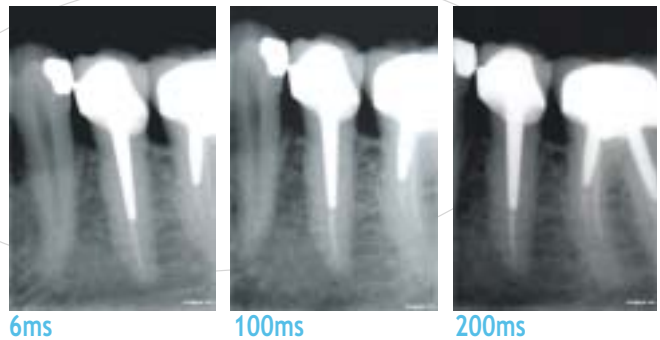
The high resolution of Sopix's CCD sensors lets you take **very high definition images** with high contrast, something that is vital for making your diagnosis.

Sensors have a working life of **100,000 images**, and the cable is specially strengthened in the most active part to avoid any breaks as much as possible.

A unique technology



Using E.C.S. (Exposure Control system) technology developed exclusively by Sopro, Sopix **automatically compensates for over or under exposure** of your images. All you have to do is set your timer once for all for the exposure time best suited to your generator and to Sopix Wireless.

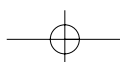


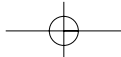
Pictures taken with an X-Mind AC, 70kV, 8mA type generator.

Sopro Imaging



Sopro Imaging, the dental software the easiness of which is recognized by a number of practitioners also allows to make the most of Sopix Wireless' major advantages. Installation is extremely **simple**, the operations having been reduced to a minimum. You can also connect your intra-oral camera, your scanner and your printer, etc.





Resi

Sopro has developed Sopix Wireless with one aim in mind: to simplify your life. You probably always ask yourself the same question when you buy an X-ray system, "but where am I going to put it?" With Sopix Wireless, the answer is in the product. When you buy a Sopix Wireless, we provide you with a universal mount for its control box, as well as a mount for the sensor.

On the generator is a good place

It's the most logical spot for taking images.

Sopix Wireless is suitable for all types of generators.



Within reach on the back of the chair

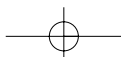
Sopix Wireless is obviously best accessible if you put it here.

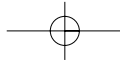
On the desk lamp if you fancy it

If for any reason you don't find these solutions suitable, choose your own.

The only limit is what seems logical to you and your imagination.

You can even have several mounts that you fix wherever you want them.



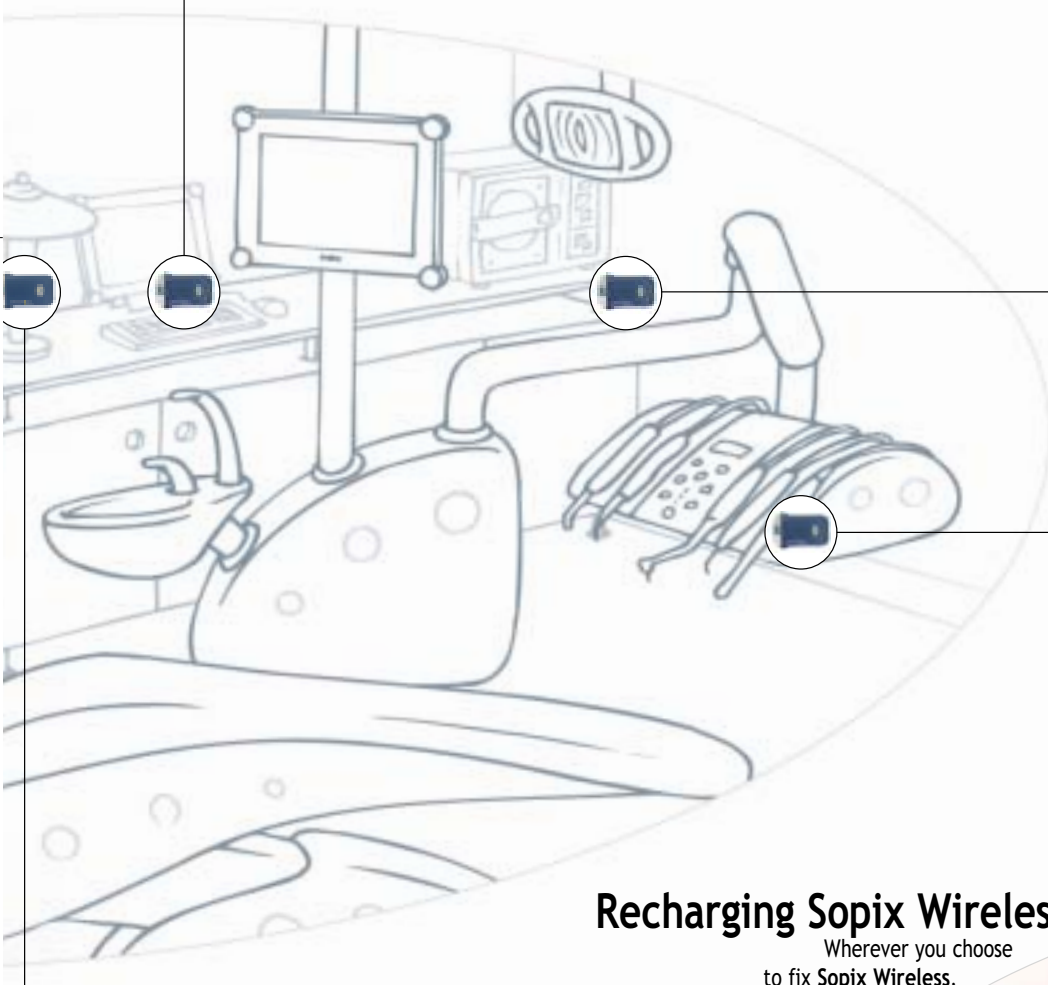


size your universe

Using its mounts,
you can put Sopix Wireless exactly
where you want.



*On the computer screen,
that makes perfect sense*

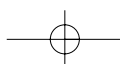


*On a board
If it's more convenient*

*On the unit
if you enjoy it*

Recharging Sopix Wireless

Wherever you choose
to fix Sopix Wireless,
its charger connects easily
via the slot provided.





At the cutting edge of Wireless, Bluetooth®!



Wireless, a route to go down

The arrival of an installation technician in your surgery is always a worrying moment. Where will all the cables go? Will much work have to be done? How long will it take? Enough stressful questions to make you dream of a wireless world, and who could blame you! **Sopix Wireless** is simply a control box, a Bluetooth® key and 10 minutes installation. But above all, no wires between **Sopix Wireless** and your computer.

The birth of the wireless technology

We need to go back to the 60s, the time when the "serial port" was invented, enabling peripherals such as keyboards, terminals, measuring hardware, etc. to be connected to computers. It was a great invention, but unfortunately a serial port only lets you connect one peripheral at a time.

Thus USB (Universal Serial Bus) was born, enabling several peripherals to be connected to the same port at the same time. All that was needed, was for a wireless equivalent of USB to be found: "Bluetooth®".

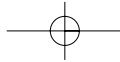
Bluetooth®, a name from the North



Of course, Bluetooth® has nothing to do with dentistry! The name Bluetooth® goes back to the Danish King Harald II Blåtán, or "blue tooth", who is attributed with unifying Sweden, Norway and Denmark... as Bluetooth® was developed to connect different technologies.

Why Bluetooth®?

Quite simply because it's the standard best suited for using small peripherals with a computer. Bluetooth® functions on the 2.4 GHz band and uses 79 different frequencies. When you compare its battery life with WIFI, Bluetooth® is the most economical in terms of energy consumption and it allows to have a small-sized controller. The other advantage of Bluetooth® is the ability to connect peripherals within a radius of ten or so metres without worrying about direction. Bluetooth® is far less sensible than WIFI to interferences generated by others equipments. The rapid progress linked to this technology allow to imagine that, one day, Bluetooth® will be the ideal link allowing you to display dental X-ray images on a PDA or on a mobile.



sopix® WIRELESS

Technical specifications

Sopix sensor Size 1

External dimensions25 x 39.5 mm
 Active surface area600 mm² (20 x 30 mm)
 Number of pixels1.25 million
 Pixel size22 µm x 22 µm

Sopix sensor Size 2

External dimensions32 x 42.5 mm
 Active surface area .990 mm² (27.50 x 36.08 mm)
 Number of pixels2.05 million
 Pixel size.....22 µm x 22 µm

Sensor technologyCCD and scintillator

True resolution 20 pl/mm

Theoretical resolution 22.7 pl/mm

Sensor cable length0.90 m +/- 0.10 m

Sopix Wireless controller

Technology.....DSP 32 bit

Connection:

Bluetooth® Wireless 1.1 class 2

Power supply:

4 NIMH AAA type batteries

Charge time1h45

Number of charge cycles500

Acquisition4096 levels of greyscale

Imaging softwareSopro Imaging

Minimum configuration required:

Pentium III - 500 Mhz;
 256 MB RAM;
 20 GB hard disk;
 1 free USB port;
 Operating system: Windows XP Pro SP2;
 Screen resolution 800 x 600 or higher.

Recommended configuration:

Pentium IV - 1.8 Ghz;
 512 MB RAM;
 40 GB hard disk;
 4 free USB ports;
 Operating system: Windows XP Pro SP2;
 Screen resolution 1024 x 768 or higher.

Accessories provided:

- Medical charger permitting recharging of the batteries without taking them out of the control box.
- Bluetooth® Key
- Sensor mount
- Control box mount
- 50 sensor protectors per sensor

Options

- Angulation kit for Sopix sensorsref: 700014
- Sopix T1 sensor protectorsref: 403014
- Sopix T2 sensor protectorsref: 403015

